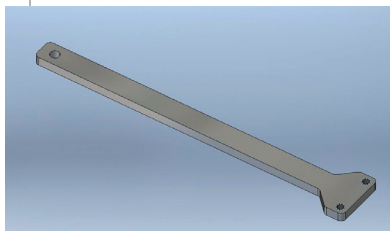
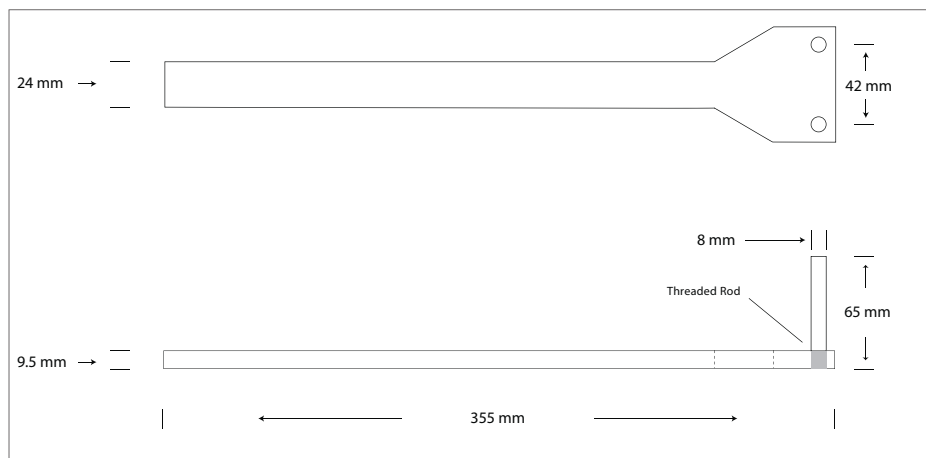


MS 98X99X UP

## Crankshaft Under-Drive Pulley Installation



1. This product should be installed by a qualified Porsche Mechanic.
2. The original belt may be retained.
3. Below is a drawing of a required pulley wrench, this is necessary to torque the pulley bolt . MantisSport can provide this tool if required.
4. Timing Boss on block must be shortened to provide clearance for new pulley.
5. For Cayman and Boxster installations a 1/2" drive 24mm socket shortened to 30mm is also required.



MantisSport  
Porsche Crank Pulley Tool  
MS 98X99X PT  
Aluminium (3/8 Stock)